



Cambridge International AS & A Level

PHYSICS

9702/11

Paper 1 Multiple Choice

October/November 2021

1 hour 15 minutes

You must answer on the multiple choice answer sheet.

You will need: Multiple choice answer sheet
Soft clean eraser
Soft pencil (type B or HB is recommended)

INSTRUCTIONS

- There are **forty** questions on this paper. Answer **all** questions.
- For each question there are four possible answers **A**, **B**, **C** and **D**. Choose the **one** you consider correct and record your choice in soft pencil on the multiple choice answer sheet.
- Follow the instructions on the multiple choice answer sheet.
- Write in soft pencil.
- Write your name, centre number and candidate number on the multiple choice answer sheet in the spaces provided unless this has been done for you.
- Do **not** use correction fluid.
- Do **not** write on any bar codes.
- You may use a calculator.

INFORMATION

- The total mark for this paper is 40.
- Each correct answer will score one mark.
- Any rough working should be done on this question paper.

This document has **20** pages. Any blank pages are indicated.



Data

speed of light in free space	$c = 3.00 \times 10^8 \text{ m s}^{-1}$
permeability of free space	$\mu_0 = 4\pi \times 10^{-7} \text{ H m}^{-1}$
permittivity of free space	$\epsilon_0 = 8.85 \times 10^{-12} \text{ F m}^{-1}$ $(\frac{1}{4\pi\epsilon_0} = 8.99 \times 10^9 \text{ m F}^{-1})$
elementary charge	$e = 1.60 \times 10^{-19} \text{ C}$
the Planck constant	$h = 6.63 \times 10^{-34} \text{ J s}$
unified atomic mass unit	$1 \text{ u} = 1.66 \times 10^{-27} \text{ kg}$
rest mass of electron	$m_e = 9.11 \times 10^{-31} \text{ kg}$
rest mass of proton	$m_p = 1.67 \times 10^{-27} \text{ kg}$
molar gas constant	$R = 8.31 \text{ J K}^{-1} \text{ mol}^{-1}$
the Avogadro constant	$N_A = 6.02 \times 10^{23} \text{ mol}^{-1}$
the Boltzmann constant	$k = 1.38 \times 10^{-23} \text{ J K}^{-1}$
gravitational constant	$G = 6.67 \times 10^{-11} \text{ N m}^2 \text{ kg}^{-2}$
acceleration of free fall	$g = 9.81 \text{ m s}^{-2}$

Formulae

uniformly accelerated motion	$s = ut + \frac{1}{2}at^2$ $v^2 = u^2 + 2as$
work done on/by a gas	$W = p\Delta V$
gravitational potential	$\phi = -\frac{Gm}{r}$
hydrostatic pressure	$p = \rho gh$
pressure of an ideal gas	$p = \frac{1}{3}\frac{Nm}{V}\langle c^2 \rangle$
simple harmonic motion	$a = -\omega^2 x$
velocity of particle in s.h.m.	$v = v_0 \cos \omega t$ $v = \pm \omega \sqrt{(x_0^2 - x^2)}$
Doppler effect	$f_o = \frac{f_s v}{v \pm v_s}$
electric potential	$V = \frac{Q}{4\pi\epsilon_0 r}$
capacitors in series	$1/C = 1/C_1 + 1/C_2 + \dots$
capacitors in parallel	$C = C_1 + C_2 + \dots$
energy of charged capacitor	$W = \frac{1}{2}QV$
electric current	$I = Anvq$
resistors in series	$R = R_1 + R_2 + \dots$
resistors in parallel	$1/R = 1/R_1 + 1/R_2 + \dots$
Hall voltage	$V_H = \frac{BI}{ntq}$
alternating current/voltage	$x = x_0 \sin \omega t$
radioactive decay	$x = x_0 \exp(-\lambda t)$
decay constant	$\lambda = \frac{0.693}{t_{\frac{1}{2}}}$

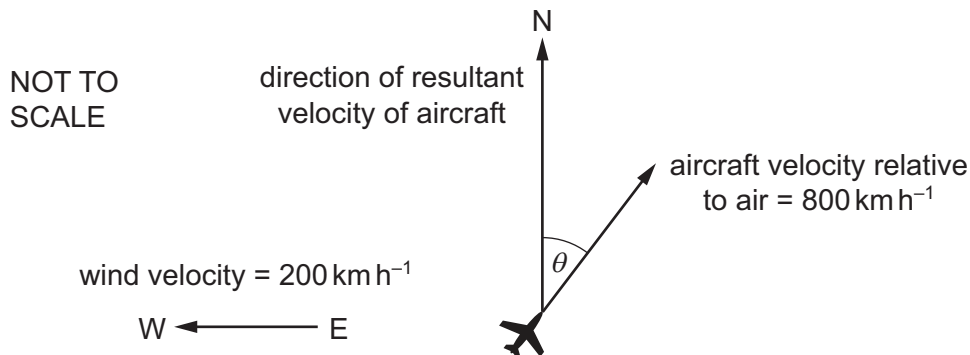
- 1 What is essential when recording a measurement of a physical quantity?
- A** the measurement has an SI unit
B the measurement has a unit and a number
C the measurement has a unit given as a base unit
D the measurement is from an analogue scale
- 2 The mobility μ of electrons travelling through a metal conductor can be calculated using the equation

$$\mu = \left(\frac{e}{m} \right) \tau$$

where e is the charge on an electron and m is its mass. The average time between the collisions of an electron with the atoms in the metal is τ .

What are the SI base units of μ ?

- A** A kg^{-1} **B** $\text{A s}^2 \text{kg}^{-1}$ **C** A s kg^{-1} **D** $\text{A s}^{-2} \text{kg}^{-1}$
- 3 An aircraft heads in a direction at an angle θ east of north with a horizontal velocity relative to the air of 800 km h^{-1} . The wind blows with a horizontal velocity of 200 km h^{-1} from east to west, as shown.



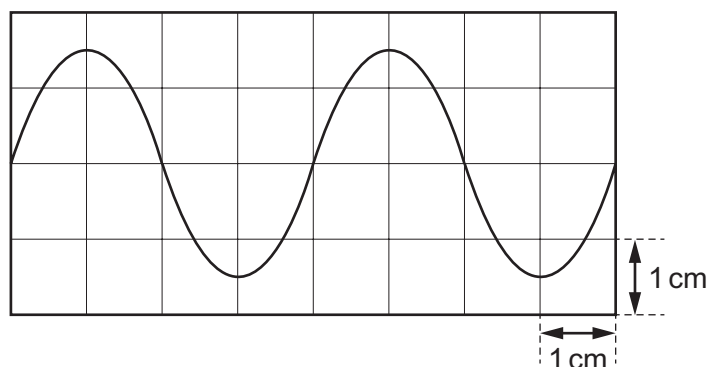
The resultant velocity of the aircraft is in a direction due north.

What is angle θ and what is the magnitude of the resultant velocity?

	$\theta / ^\circ$	resultant velocity / km h^{-1}
A	14	770
B	14	820
C	76	770
D	76	820

- 4 A cathode-ray oscilloscope (CRO) is used to display a sound wave of frequency 2000 Hz.

The display of the CRO is shown.



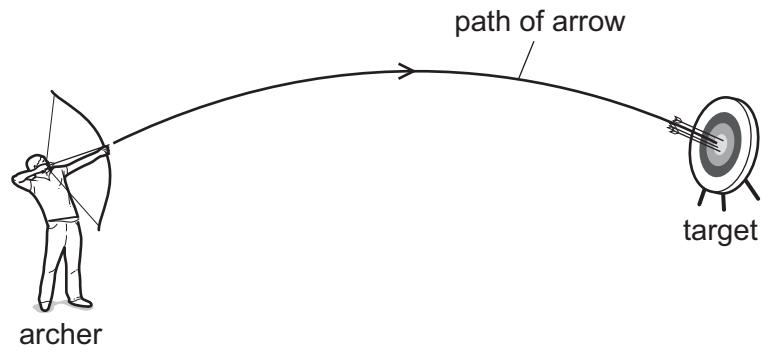
What is the time-base setting on the CRO?

- A** $125 \mu\text{s cm}^{-1}$ **B** $250 \mu\text{s cm}^{-1}$ **C** $500 \mu\text{s cm}^{-1}$ **D** $1000 \mu\text{s cm}^{-1}$
- 5 Four possible sources of error in a series of measurements are listed.
- 1 an analogue meter whose scale is read from different angles
 - 2 a meter which always measures 5% too high
 - 3 a meter with a needle that is not frictionless, so the needle sometimes sticks slightly
 - 4 a meter with a zero error

Which errors are random and which are systematic?

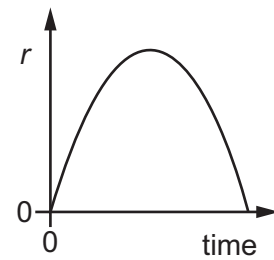
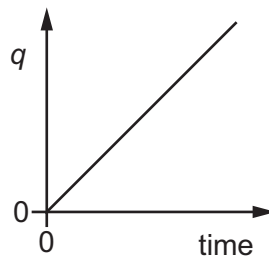
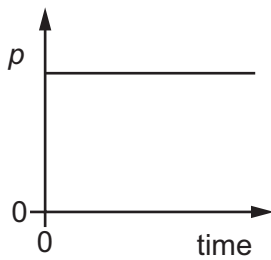
	random error	systematic error
A	1 and 2	3 and 4
B	1 and 3	2 and 4
C	2 and 4	1 and 3
D	3 and 4	1 and 2

- 6 An archer shoots an arrow at a target. The diagram shows the path of the arrow.



Air resistance is negligible.

The graphs show how three different quantities p , q and r vary with time.



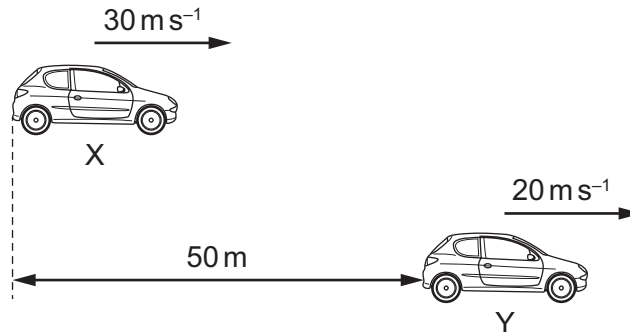
Which quantity could be the horizontal component of displacement and which quantity could be the vertical component of displacement of the arrow?

	horizontal component of displacement	vertical component of displacement
A	p	q
B	q	r
C	r	p
D	r	q

- 7 Two cars X and Y are positioned as shown at time $t = 0$.

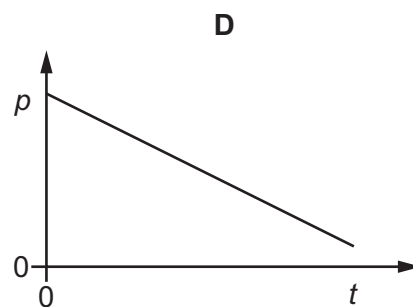
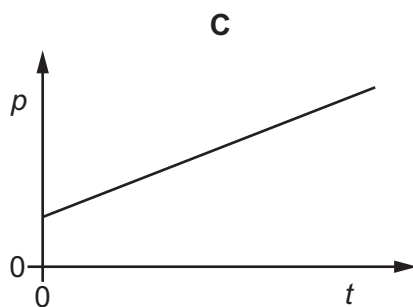
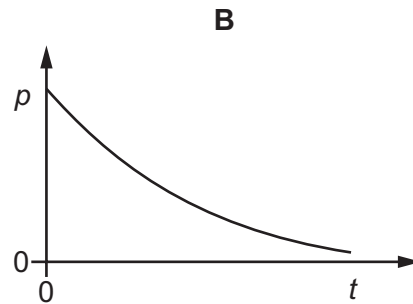
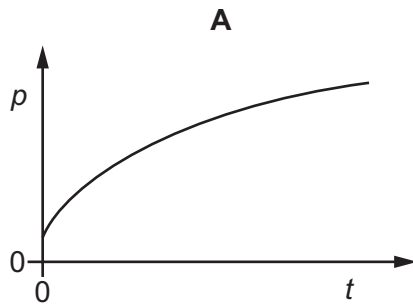
They are travelling in the same direction.

X is 50 m behind Y and has a constant velocity of 30 m s^{-1} . Y has a constant velocity of 20 m s^{-1} .



What is the value of t when X is level with Y?

- A 1.0 s B 1.7 s C 2.5 s D 5.0 s
- 8 A constant resultant force acts on an object in the direction of the object's velocity.
Which graph could show the variation with time t of the momentum p of the object?



- 9 Which statement **must** be true for an object in a gravitational field?
- A If the object has mass then the field causes it to accelerate.
B If the object has mass then the field causes it to have weight.
C If the object has weight then the field causes it to accelerate.
D If the object has weight then the field causes it to have mass.

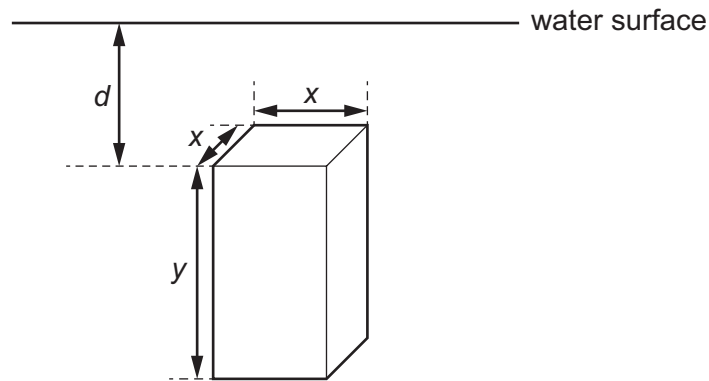
- 10 A ball of mass 0.16 kg is travelling horizontally at a speed of 20 ms^{-1} .

It collides with a wall and rebounds with a speed of 15 ms^{-1} along its original path. The ball is in contact with the wall for a time of 1.0 ms .

What is the average force exerted by the wall on the ball?

- A 800 N B 2400 N C 3200 N D 5600 N
- 11 A uniform solid block is fully submerged in a tank of water.

The dimensions of the block are x and y , as shown.



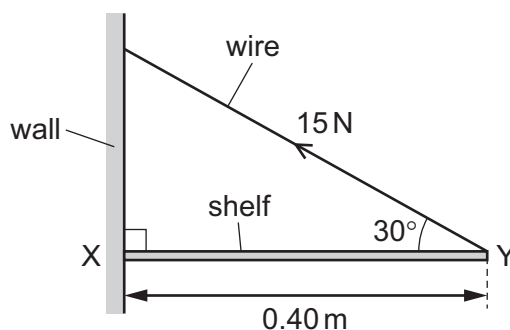
The block is held vertically in the position shown. The density of the block is the same as the density of the water.

If the block is always held at the same depth d below the surface of the water, which single change would **increase** the magnitude of the upthrust force on the block?

- A decrease the density of the block
B hold the block horizontally
C increase dimension y
D increase the density of the block

- 12 A shelf XY is 0.40 m long and is attached to a wall at end X.

It is kept horizontal by a wire attached to Y and to the wall, as shown.



The tension force in the wire is 15 N at an angle of 30° to the horizontal.

What is the moment of this force about point X?

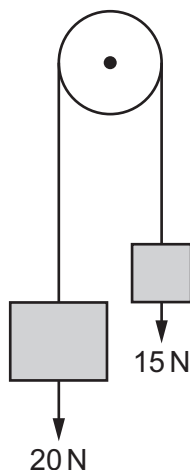
- A 3.0 Nm B 5.2 Nm C 6.9 Nm D 12 Nm
- 13 A statement about the principle of moments with some words omitted is shown.

'For an object in a state of rotational equilibrium, the sum of the clockwise moments about any point is equal to the sum of the anticlockwise moments about

Which words correctly complete the statement?

- A any point
 B the centre of gravity of the object
 C the pivot
 D the same point
- 14 A bird dives to a depth of 1.50 m below the surface of a lake. Atmospheric pressure is 101 kPa. The density of water is 1000 kg m⁻³.
- What is the pressure at this depth?
- A 14.7 kPa B 86.3 kPa C 103 kPa D 116 kPa
- 15 Which statement about energy is **not** correct?
- A Energy is never lost but it may be transferred between different forms.
 B In an inelastic collision, the total energy is constant.
 C The efficiency of a system is the ratio of the useful energy output to the total energy input.
 D When a machine does work, friction reduces the total energy.

- 16 A pulley of radius 0.40 m supports weights of 20 N and 15 N by means of a thin string, as shown.



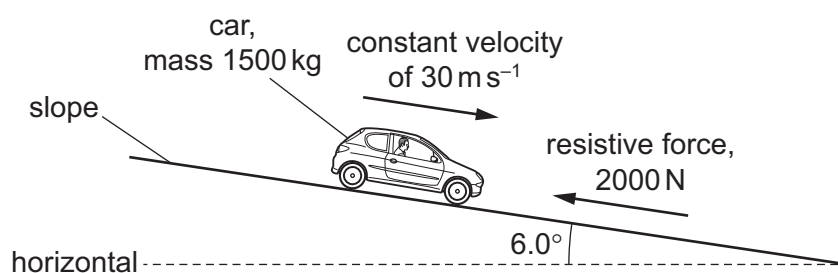
The weights are moved by slowly rotating the pulley clockwise through an angle of 60° .

What is the increase in the total gravitational potential energy of the weights?

- A** 0.33 J **B** 2.0 J **C** 2.1 J **D** 15 J
- 17 A car of mass 1500 kg accelerates from an initial speed of 15 m s^{-1} . This acceleration causes the car to gain $3.0 \times 10^5 \text{ J}$ of kinetic energy.

What is the change in the speed of the car?

- A** 5.4 m s^{-1} **B** 10 m s^{-1} **C** 20 m s^{-1} **D** 25 m s^{-1}
- 18 A car of mass 1500 kg travels at a constant velocity of 30 m s^{-1} down a slope. The slope is at an angle of 6.0° to the horizontal, as shown.



The magnitude of the total resistive force acting on the car is 2000 N.

What is the power output of the car's engine?

- A** 14 kW **B** 60 kW **C** 110 kW **D** 380 kW

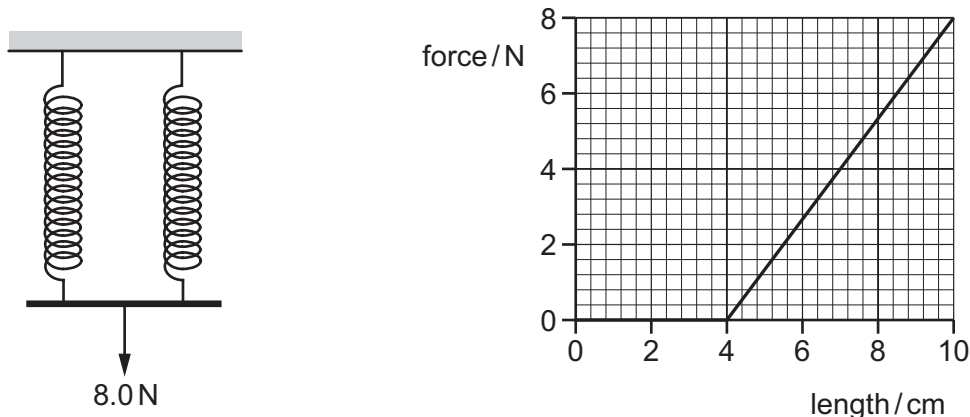
- 19 A metal wire, of cross-sectional area A and unstretched length l , is subjected to stress σ . As a result it has strain ε .

Which expression gives the Young modulus of the metal?

- A $\frac{\varepsilon}{\sigma}$ B $\frac{\varepsilon A}{\sigma l}$ C $\frac{\sigma}{\varepsilon}$ D $\frac{\sigma l}{\varepsilon A}$

- 20 Two identical springs are connected in parallel.

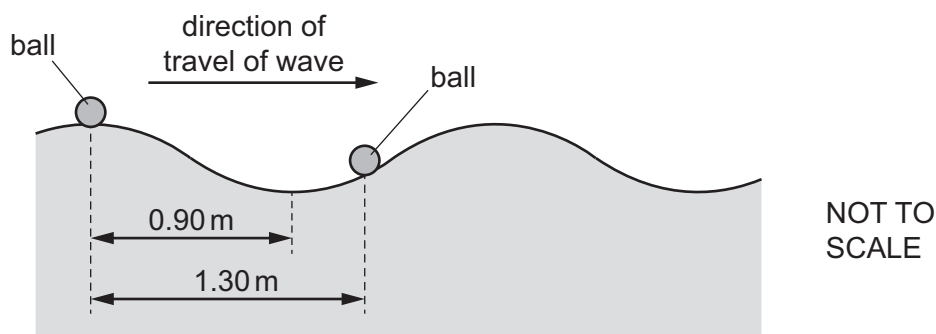
A weight of 8.0 N is hung from the combination, as shown.



The graph shows the variation with length of the force applied to **one** of the springs.

What is the strain energy in **one** of the springs?

- A 0.060 J B 0.12 J C 0.14 J D 0.24 J
- 21 Two balls float on the surface of the sea. The balls are separated by a distance of 1.30 m.
- A wave travels on the surface of the sea so that the balls move vertically up and down.



The distance between a crest and an adjacent trough of the wave is 0.90 m.

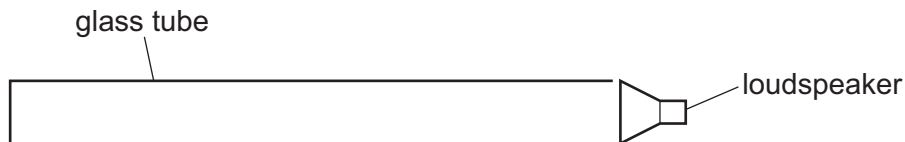
What is the phase difference between the two balls?

- A 55° B 110° C 160° D 260°

22 Which statement about transverse or longitudinal waves is **not** correct?

- A Longitudinal waves can be used to demonstrate diffraction.
- B Longitudinal waves can travel in a vacuum.
- C Transverse waves can form stationary waves.
- D Transverse waves can transfer energy.

23 A glass tube is closed at one end and has a loudspeaker at the other end.



A stationary wave is formed with a node at the closed end of the tube when the sound has frequency f_0 . There are no other nodes.

The frequency of the sound is then slowly increased.

What is the frequency of the sound that produces the next stationary wave?

- A $1.25f_0$
- B $1.50f_0$
- C $2.00f_0$
- D $3.00f_0$

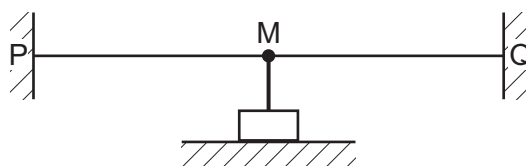
24 With which waves can the Doppler effect be observed?

- A all waves including sound and light
- B light waves only
- C sound and light waves only
- D sound waves only

25 Which radiation could consist of waves of wavelength 0.5 nm?

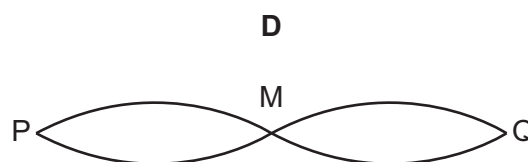
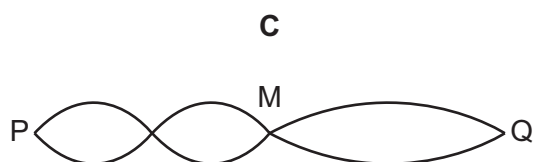
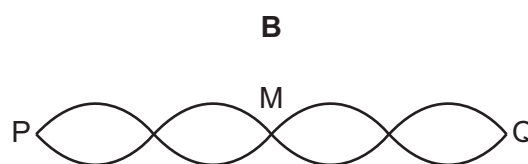
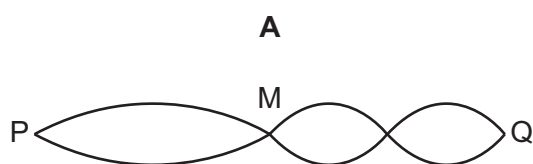
- A γ -rays
- B ultraviolet
- C visible light
- D X-rays

- 26 A string is fixed between point P and an oscillator M. Another string is fixed between M and point Q. M is midway between P and Q.



The frequency of the oscillator is adjusted until a stationary wave is formed on both strings. The speed of the wave between P and M is twice the speed of the wave between M and Q.

Which diagram could represent the stationary wave pattern?

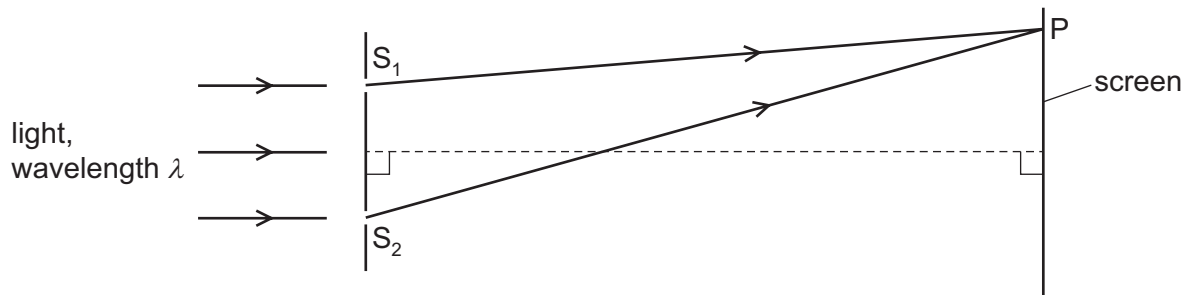


- 27 A water wave in a ripple tank is diffracted as it passes through a gap in a barrier.

Which two factors affect the angle of diffraction of the wave?

- A** the amplitude and frequency of the incident wave
- B** the amplitude of the incident wave and the width of the gap
- C** the wavelength and amplitude of the incident wave
- D** the wavelength of the incident wave and the width of the gap

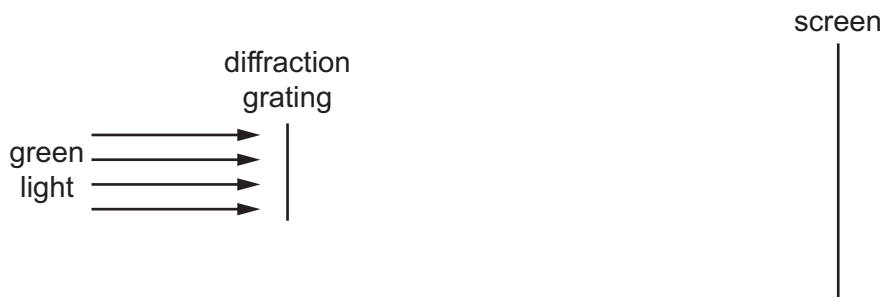
- 28 Light of wavelength λ is incident normally on two narrow slits S_1 and S_2 , a small distance apart. Bright and dark fringes are observed on a screen a long distance away from the slits.



The n th **dark** fringe from the central bright fringe is observed at point P on the screen.

Which equation is correct for all positive values of n ?

- A $S_2P - S_1P = \frac{n\lambda}{2}$
- B $S_2P - S_1P = n\lambda$
- C $S_2P - S_1P = (n - \frac{1}{2})\lambda$
- D $S_2P - S_1P = (n + \frac{1}{2})\lambda$
- 29 Green light is incident normally on a diffraction grating and forms a diffraction pattern on a distant screen.



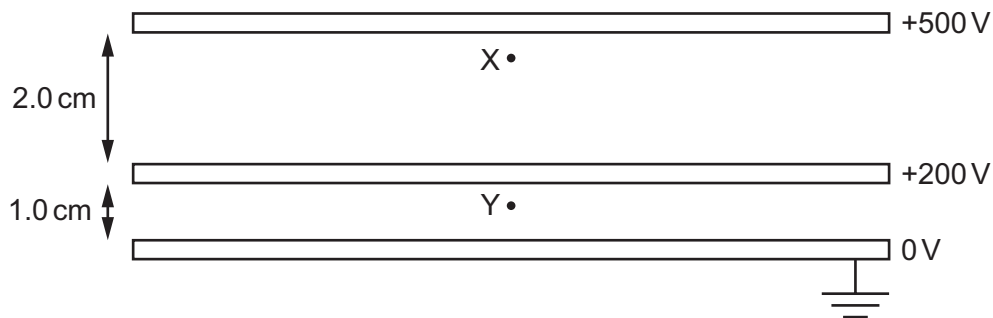
Which change, on its own, would **decrease** the separation of the diffraction maxima on the screen?

- A Increase the distance between the screen and the diffraction grating.
- B Replace the diffraction grating with a grating that has a smaller separation between the slits.
- C Replace the diffraction grating with a grating that has fewer slits per unit length.
- D Replace the green light with red light.

30 What is meant by electric field strength?

- A force per unit charge acting on a small mass
- B force per unit charge acting on a small positive charge
- C force per unit mass acting on a small mass
- D force per unit mass acting on a small positive charge

31 Three parallel metal plates of the same area are fixed with a separation of 2.0 cm between the top plate and the middle plate, and 1.0 cm between the middle plate and the bottom plate. The top plate is held at a potential of +500 V, the middle plate at +200 V and the bottom plate is earthed, as shown.



What is the value of the ratio $\frac{\text{magnitude of force on an electron at X}}{\text{magnitude of force on an electron at Y}}$?

- A 0.75
- B 1.00
- C 1.25
- D 1.50

32 The current I in a wire is given by the equation

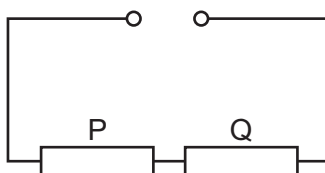
$$I = nAvq$$

where n is the number density of the free electrons, A is the cross-sectional area of the wire, v is the average drift velocity of the free electrons and q is the charge of an electron.

Which relationship is **not** used in the derivation of this equation?

- A charge = current \times time
- B distance = speed \times time
- C number = number density \times area
- D volume = length \times area

- 33 A circuit contains two resistors, P and Q, and a power supply of negligible internal resistance, as shown.

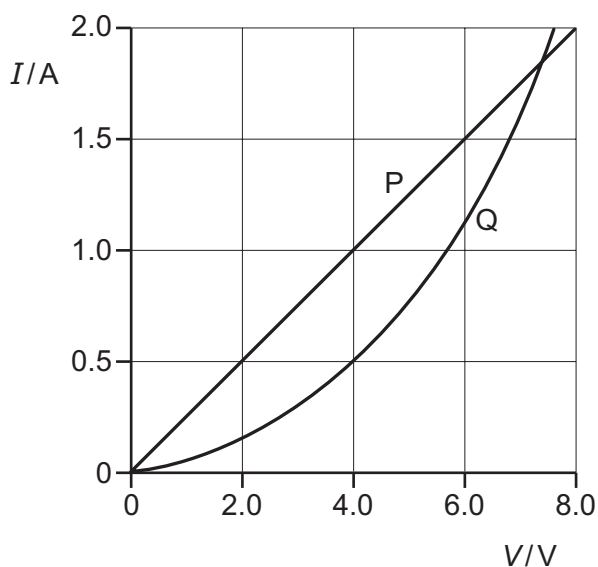


The current in resistor P is 2.0 A and the power dissipated by resistor P is 18 W.

Resistor Q dissipates 240 J of energy when a charge of 40 C passes through it.

What is the electromotive force (e.m.f.) of the power supply?

- A 3.0 V B 6.0 V C 9.0 V D 15 V
- 34 The I - V characteristics of two electrical components P and Q are shown.



Which statement is correct?

- A For a current of 0.5 A, the power dissipated in Q is double that in P.
 B For a current of 1.9 A, the resistance of Q is approximately half that of P.
 C The resistance of Q increases as the current in it increases.
 D P is a fixed resistor and Q is a filament lamp.

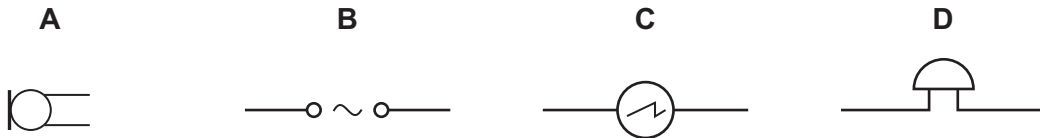
- 35 Two copper wires S and T, of equal length, are connected in parallel. Wire S has a diameter of 3.0 mm. Wire T has a diameter of 1.5 mm.

A potential difference is applied across the ends of this parallel arrangement.

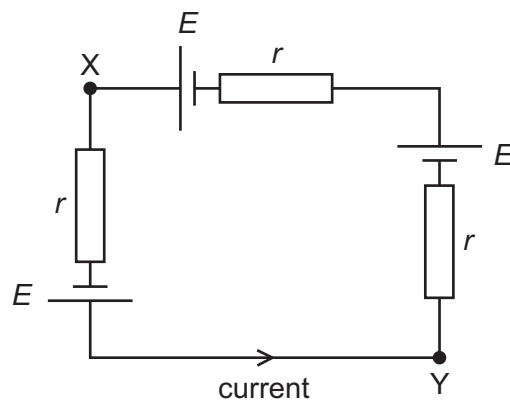
What is the value of the ratio $\frac{\text{current in S}}{\text{current in T}}$?

- A $\frac{1}{4}$ B $\frac{1}{2}$ C 2 D 4

- 36 What is the circuit symbol for an oscilloscope?



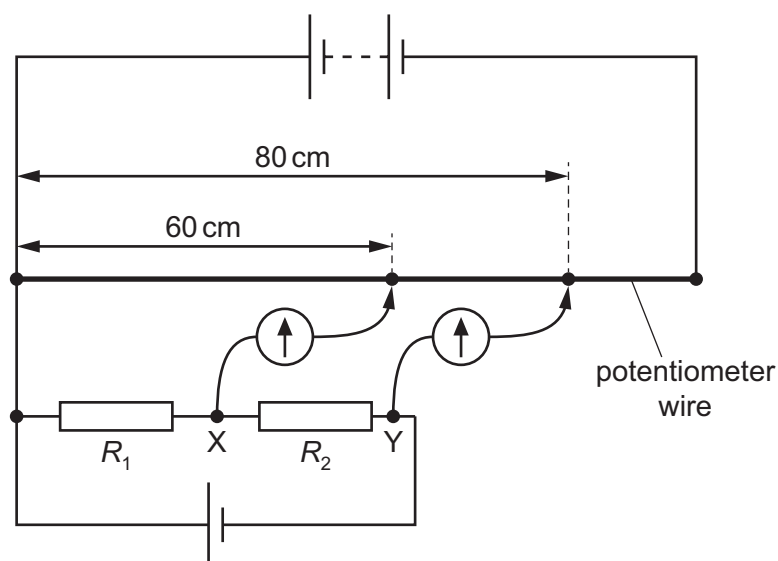
- 37 Three identical cells, each of electromotive force (e.m.f.) E and internal resistance r , are connected as shown.



What is the potential difference between points X and Y?

- A 0 B E C $2E$ D $3E$

- 38 Potential differences across two resistors of resistances R_1 and R_2 are compared using a potentiometer wire (uniform resistance wire) in the electrical circuit shown.



One terminal of a galvanometer is connected to point X. The galvanometer reads zero when its other terminal is connected to a point that is a distance of 60 cm from one end of the potentiometer wire.

One terminal of a second galvanometer is connected to point Y. This galvanometer reads zero when its other terminal is connected to a point that is a distance of 80 cm from the same end of the potentiometer wire.

What is the ratio $\frac{R_2}{R_1}$?

- A $\frac{1}{3}$ B $\frac{3}{4}$ C $\frac{3}{1}$ D $\frac{4}{3}$
- 39 A uranium-238 nucleus, ${}_{92}^{238}\text{U}$, undergoes a series of nuclear decays to form uranium-234, ${}_{92}^{234}\text{U}$.

Which series of decays could give this result?

- A emission of four β^- particles
 B emission of four γ -rays
 C emission of one α -particle and two β^- particles
 D emission of two α -particles and eight β^- particles
- 40 Which combination of up (u) and down (d) quarks forms a proton?
- A u u u B u u d C u d d D d d d

BLANK PAGE

Permission to reproduce items where third-party owned material protected by copyright is included has been sought and cleared where possible. Every reasonable effort has been made by the publisher (UCLES) to trace copyright holders, but if any items requiring clearance have unwittingly been included, the publisher will be pleased to make amends at the earliest possible opportunity.

To avoid the issue of disclosure of answer-related information to candidates, all copyright acknowledgements are reproduced online in the Cambridge Assessment International Education Copyright Acknowledgements Booklet. This is produced for each series of examinations and is freely available to download at www.cambridgeinternational.org after the live examination series.

Cambridge Assessment International Education is part of the Cambridge Assessment Group. Cambridge Assessment is the brand name of the University of Cambridge Local Examinations Syndicate (UCLES), which itself is a department of the University of Cambridge.